



GENERAL

MILLING TECH



**BUILDING
REAL WORLD
SOLUTIONS**



CONTENTS

CLEANING SECTION

Waste Purifier	1
Vibro Waste Purifier	2
Stone Separator	3
Husk Peeler	4
Scanner	5
Air Duct	6
Trieur	7
Horizontal Intensive Dampening	8
Angled Intensive Dampening	9
Vertical Washing	10
Aspirator	11
Dust Cyclone	12
Magnet	13
Automatic Tempering Machine	14

GRINDING SECTION

Roller Mill	15
Double Roller Mill	16
Plansifter	17
Semolina Purifier	18
Bran Brush	19
Vibro Bran Brush	20
Pneumatic Fan	21
Jet Filter	22
Semolina Detacher	23
Tumbler Detacher	24
Vibro Goods Feeder	25
Vitamin Machine	26

PACKAGING SECTION

Divider	27
Checking Sieve	28
Automatic Packaging	29
Silo Discharger	30
Efficiency Scale	31
Direction Valve	32

CARRYING SECTION

Spiral	33
U Spiral	34
Chained Conveyor	35
Bucket Elevator	36
Air Lock	37
Blend	38
Pneumatic Valve	39
Loading Band	40

FEED MACHINERY

Dosing	41
Hammer Mill	42
Mixer	43
Molassier	44
Pellet Press	45
Pellet Cooler	46
Granular	47
Pellet Sieve	48
Premix	49
Hammer Mill Magnet	50
Chrome Air Lock	51
Molasses Oil Tank	52

STORAGE SYSTEM

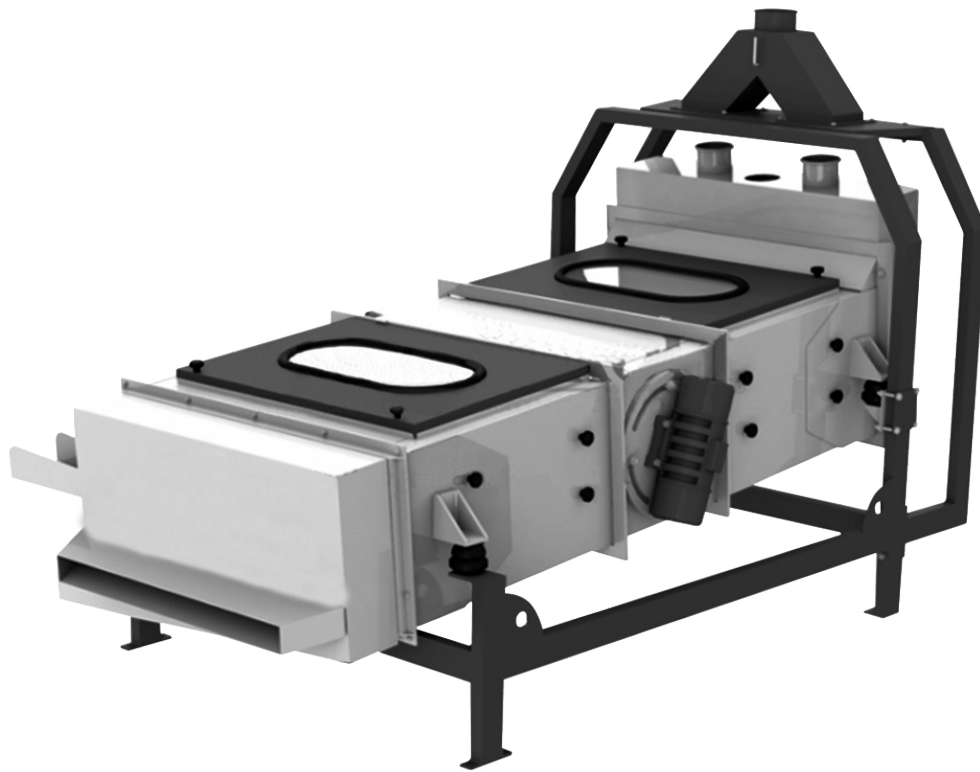


It is used for separating garbage, straw, ear, other coarse and small foreign matter from wheat and other whole grains.

In the food industry; flour and semolina factories, seed cleaning facilities, grain cleaning and calibration facilities, grain factories in feed mills, silo facilities and other similar industrial facilities.

Specifications

- Low power consumption, high efficiency and high capacity
- Easy and minimum maintenance, trouble-free operation thanks to its vibro-motor drive,
- Possibility to reach maximum capacity and efficiency for various grains with adjustable sieve angle,
- Durability and long life
- Quick and easy replacement of sieves, practical cleaning opportunity
- Quiet working



The machine consists of a vibrating body placed in a fixed chassis. It is driven by two symmetrical vibration motors. The vibration level of the machine is adjusted by changing the inclination of the vibration motors and the degree of motor weight. To isolate vibration rubber vibration absorbing wedges are used. Aspiration to prevent dust in the area where the product is poured into the machine are available. There are two rows of sieves in the garbage separator. While the first row enables the separation of large particles from wheat, the second row It separates small foreign materials from wheat.

It should be used with the garbage purifier, air duct or radial tarar. Thus, light foreign substances are also separated.

Specifications

- Low power consumption, high efficiency and high capacity
- Easy and minimum maintenance, trouble-free operation thanks to its vibro-motor drive,
- Possibility to reach maximum capacity and efficiency for various grains with adjustable sieve angle,
- Durability and long life
- Quick and easy replacement of sieves, practical cleaning opportunity
- Quiet working

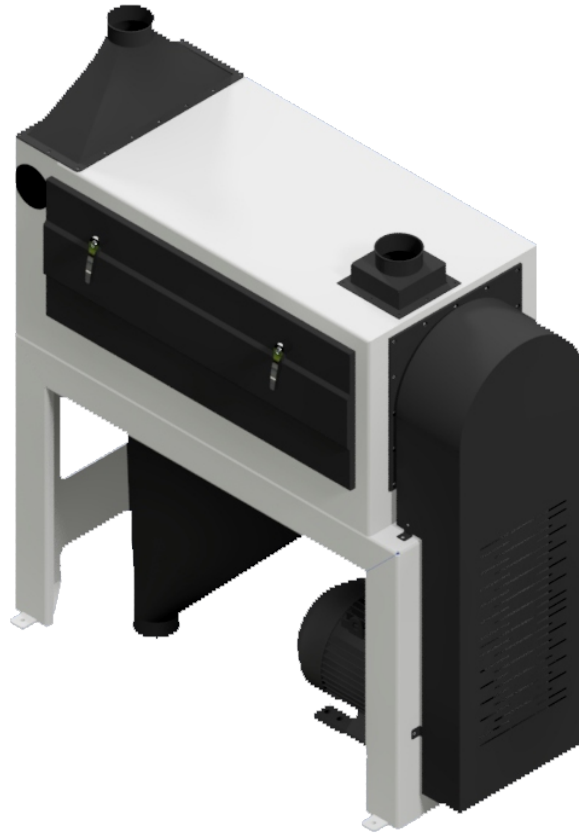


Heavy foreign materials such as stones, glass and metal pieces or soil fragments in the grain, with the help of screening method and air used to separate. The machine consists of a fixed chassis and vibrating body. Considering the difference in stone and grain density The designed stone separator separates the stone by directing it in the opposite direction of gravity and the grain in the direction of gravity with the help of vibration. Vibratory With the help of sieves, wheat is first separated from large stones and then from smaller stones with the help of a second sieve. Also ventilation Dusts are absorbed by the air aspiration from the line. Except for flour and semolina factories, in all grain factories, vegetable oil It is also used in cocoa and coffee processing plants.

Specifications

- Effective cleaning
- Automatic control
- Vibration free operation
- Durability
- Long life
- Vibration-absorbing long-lasting special shoes

GENERAL
MILLING TECH



In the peeling of wheat, barley, rye and similar grains and dust, sand, small seeds, crust used for cleaning insects and foreign matters. Self-rubbing of grain with intense pressure, placed on the rotor in the profile suitable for abrasion made of a special material that is rolled out cylindrically and made of knitted it is cleaned by rubbing the knitted shirt and the peeling process takes place. Dusts come out of the pores of the shirt. It is directed to the room and to the exit by means of a bunker. Wheat is directed to the outlet in the liner with the angle of the anchors it is taken out.

Specifications

- Low energy consumption and high efficiency
- Eliminates dust
- Quiet working condition
- Efficient cleaning process
- Easy and fast sieve change
- Minimum maintenance and easy cleaning
- Due to intense friction, it breaks down insects and reduces the number of bacteria

GENERAL
MILLING TECH

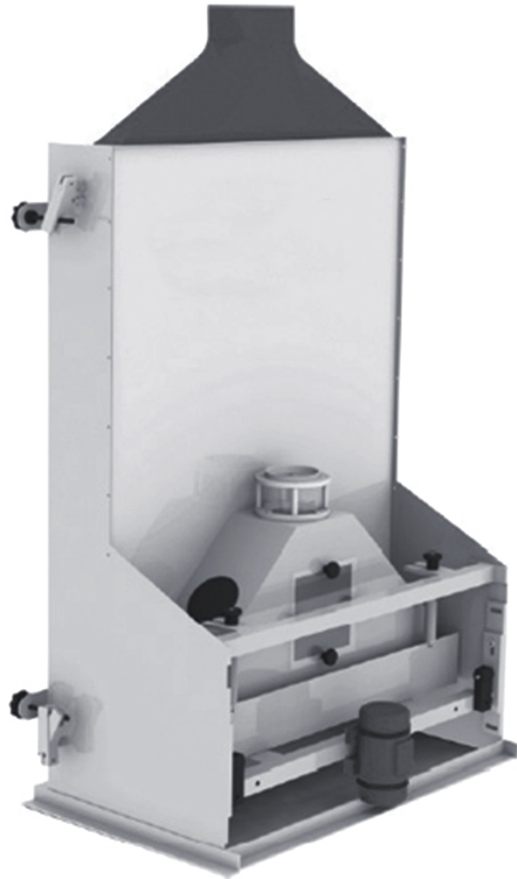


Thanks to the fan on the machine, the wheat and foreign substances in it are separated from each other. Foreign matter separated is collected by the screw conveyor inside the machine and discharged from the waste outlet. Keep the air inlet channels on the machine regularly. There is a pneumatic mechanism that cleans. Flour mills are available as it contains its own fan and cyclone system. It does not burden the aspiration system and the investment cost is lower.

Specifications

- High quality, performance, efficiency, capacity
- Long life
- High precision
- Maximum hygiene
- Maximum security
- Maximum ease of use
- Maximum periodic maintenance need
- Minimum part replacement time
- Minimum energy consumption
- Minimum sound level
- Perfection and aesthetics

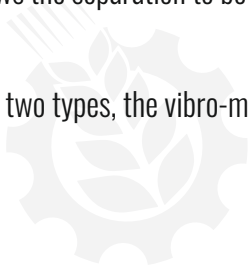
GENERAL
MILLING TECH



The air volume of this machine, which works with air flow, is adjusted according to the wheat type used, and it works optimally. There are two models with or without vibration motor. Vibration motor ensures homogeneous distribution of the product when it comes from a single point. increases performance by providing. In the air ducts used after the separator, the vibration motor not used. Since it does not generate negative air pressure, it should be connected to the factory's aspiration system.

The lighting allows the separation to be seen clearly and thus all kinds of air adjustments to be made.

Manufactured in two types, the vibro-motorized one is usually together with the Peeler, the non-motorized Garbage Purifier used with machine.



GENERAL
MILLING TECH

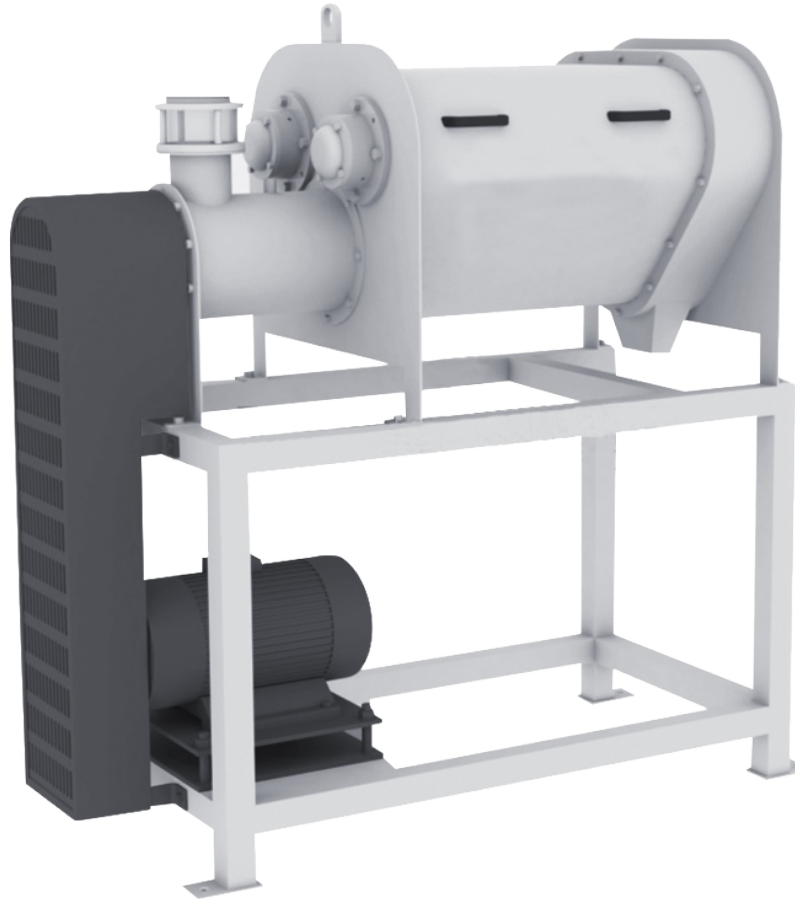


Seeds in wheat, corn, lentils, rice, and similar grains, such as barley, rye, lentil, broken wheat, long grain and absut it separates foreign matter and is used to separate broken parts. Foreign substances in the product entering the rotating drum and the broken grain goes into specially made drum pockets with a steel body rotating by centrifugal force. The drum rotating to a certain point When it arrives, foreign substances and broken grains in the pockets fall into a special adjustable channel in the drum. Cleared while the grain goes out of the drum, foreign substances and broken grains falling into the channel are a spiral placed in the channel ejected.

During operation, the dry grain in the drum makes powder. This dust is extracted by low pressure air.

Specifications

- High quality, efficiency, efficiency, capacity
- Long life
- Excellent indentation slot quality
- Interchangeable segments
- Easy maintenance and use
- Low periodic maintenance
- Maximum efficiency, low energy consumption
- Aerodynamic and solid structure
- Leak-proof system



It prevents the cereal grains from breaking during the annealing process. All main bodies made of metal can be easily removed. feature. The wheat to be moistened enters the machine entrance automatically. Water inlet is either electronic or mechanical It is controlled by a flow meter annealing device. Wheat and water enter the machine at the same time. By 5% even in the shortest distance temper is provided.

Specifications

- Low energy consumption and high efficiency
- Minimum maintenance and easy cleaning
- Quiet working condition
- Efficient condensation process
- Easy and fast shutter replacement
- High humidification rate
- Automatic flow rate control and adjustable humidity

GENERAL
MILLING TECH



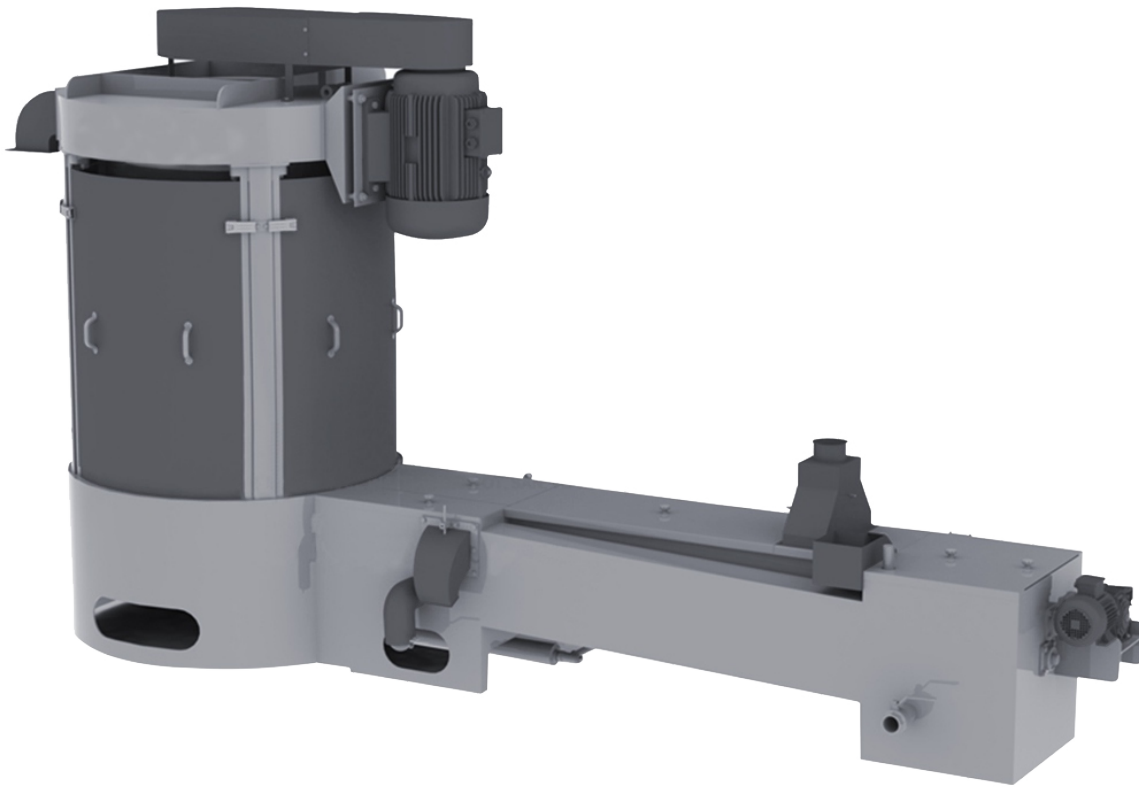
The rotor in an angled semi-cylindrical body made of stainless steel, formed in appropriate dimensions on the rotor.

While the grain is carried up with the hoes made of durable hard material, it is subjected to intensive mixing at a measured speed and the water is absorbed. In the grain processing plants, the desired moisture content of the grains is enough to penetrate and feed the grain. It brings the grain to be annealed with water and ensures that it is mixed homogeneously. Also rotating at high speed as a result of the friction caused by the rotor, a significant amount of peeling is provided on the grain shell.

Specifications

- High humidification rate
- Low energy consumption
- Durability and long service life
- Minimum and easy maintenance
- Easy and fast installation
- Low investment, maintenance and operating costs
- Automatic flow rate control and adjustable humidity
- Stainless steel construction

GENERAL
MILLING TECH

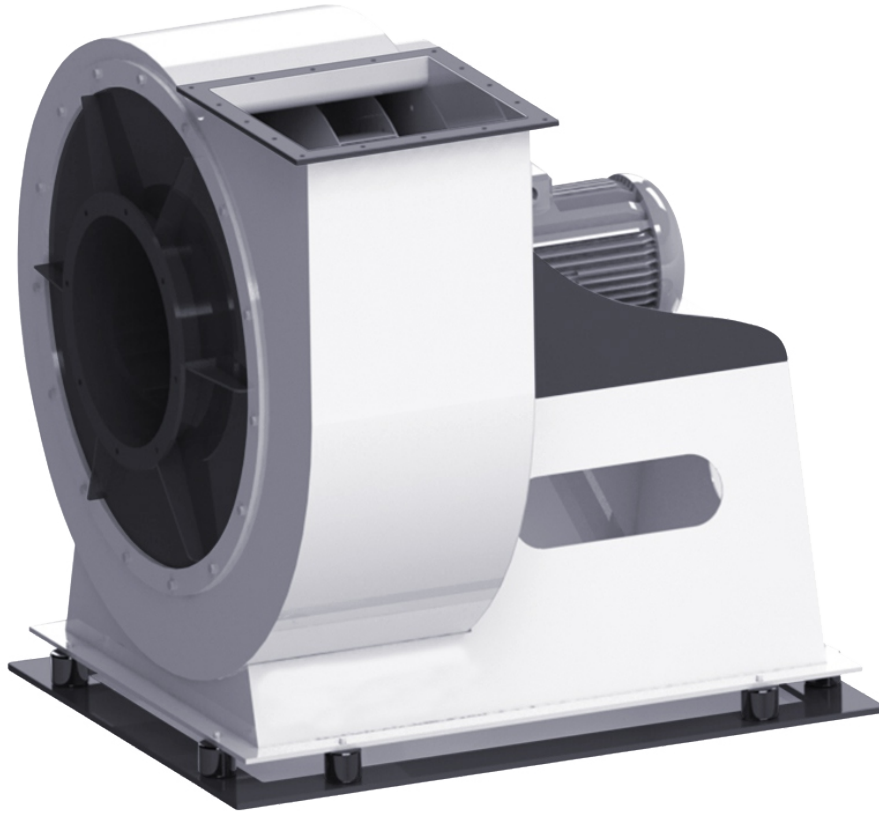


It cleans the stone, soil, husk and dust particles of the wheat with water. The upper screw rotates rapidly, shaking the water, performs. The entry point of the wheat into the washing vessel can be adjusted back and forth, and the duration of the wheat in water can be adjusted. Do not mix oil and water. It has a preventive seal mechanism. Heavy impurities of the wheat are thrown out by the stony screw rotating in the opposite direction by settling on the bottom. The top wheat dragged with the screw enters the vertical drying system working with the centrifuge system. Fast rotating pallets in vertical drying perforated wheat shutter. It allows the water to be purified from wheat by throwing it towards the sheet. Moist wheat is drained from its upper part.

Specifications

- Low energy consumption and high efficiency
- Minimum maintenance and easy cleaning
- Quiet working condition
- Efficient condensation process
- Easy and fast shutter replacement

GENERAL
MILLING TECH



Low pressure aspirators are used in the food industry, such as industrial establishments, heating and ventilation facilities and casting industry. Aspirators, models of which are determined according to flow and pressure values, are used at different engine powers. It helps to classify products with air, especially in the cleaning and processing of grains in the food industry. Body and fan, It is produced with great precision and is mounted on a strong steel base. Fan equipped with special blades and design, high speed It can be easily installed and dismantled for needs.

Specifications

- High quality, efficiency, capacity
- Long life
- Maximum hygiene
- Maximum security
- Maximum simplified use
- Low periodic maintenance
- Little time wasted to change spare parts
- Maximum efficiency with minimum energy consumption
- Noiseless
- No vibration
- Aerodynamic and solid structure



It is generally used as a dust collector, dust and air separator for the product. It is found in aspiration systems of cleaning machines. Dust removed by aspiration is separated from the air by means of a cyclone. Dust-laden carrier air, thanks to the helical construction, it is forced to rotate in the cyclone. Dust particles due to centrifugal forces caused by rotation thrown into the environment. Dust particles are transported along a helix path through the vortex created by the air pushed from behind. Separating from dusts the fresh air passes through the suction pipe and goes to the outlet. Dust particles cause air friction against wall along spiral is directed downwards.

Specifications

- High quality, efficiency, efficiency, capacity
- Long life
- Maximum hygiene
- Maximum security
- Maximum simplified use
- Low periodic maintenance
- Little time wasted to change spare parts
- Maximum efficiency with minimum energy consumption
- Aerodynamic and solid structure





In general, nut, screw etc. mixed into the granular product in food processing and storage facilities. by catching metal products prevents damage to the machine in the next station.

Specifications

- Long life
- Maximum hygiene
- Maximum security
- Maximum simplified use
- Low periodic maintenance
- Noiseless
- No vibration
- Aerodynamic and solid structure

GENERAL
MILLING TECH



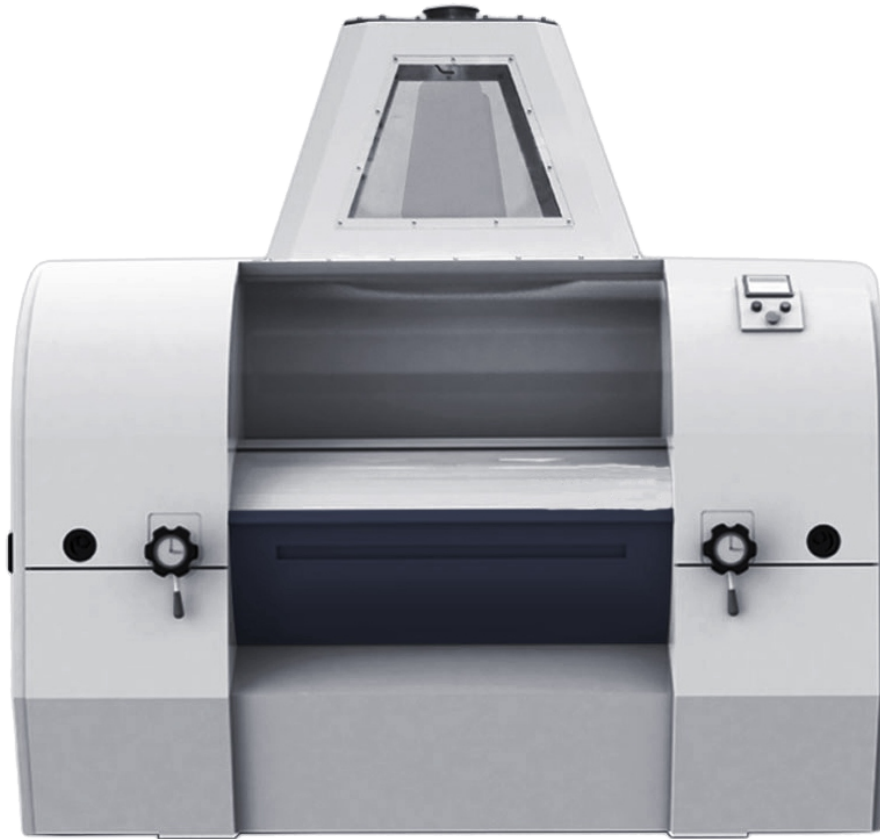
Automatic Dampening Machine; cleaned and before grinding, especially in flour mills, wheat with different moisture content It is used to ensure that it reaches a humidity level precisely and without error. Provided that the wheat is lower than desired Regardless of the humidity, the wheat produced is provided to be in the desired moisture content without any error.

Specifications

- High quality
- High performance
- High efficiency
- High Capacity
- Long life
- High precision
- Maximum Hygiene
- Maximum security
- Maximum ease of use
- Minimum periodic maintenance need
- Minimum part replacement time
- Minimum Energy Consumption



GENERAL
MILLING TECH



It is used for breaking and crushing wheat in flour factories. The roller, which is the most important machine of the flour factory, is two working in parallel. It consists of two rolls. Unlike the pneumatic roller, the incoming product amount is measured with the help of a sensor or load cell. Feed rollers it changes speed according to the incoming product amount and provides homogeneous flow. At the same time, between the rolls are closed by pneumatic pistons and allows the product to be grinded through balls. The bearings of the rolls are ductile iron and the arms of the rolls are conical. Gear driven and belt driven. It can also be produced with an optional touch control screen. Especially based on the opening system, It provides quick and easy access thanks to the side covers that can be opened one by one, and the possibility of rapid ball removal with the cover opened on the ball. Through the proven belt drive, it offers the advantage of quiet operation, elimination of oil maintenance and contamination. The machine consists of two side-by-side passages, each with a pair of balls positioned in parallel.

Specifications

- Optionally controlling ball speeds and spacing with PLC
- It crushes with specially cast balanced balls of 500-550 Brinell hardness.
- Fine adjustment mechanisms to adjust the intervals of the roller mills in micron values
- PLC system connection and use
- Product feeding control system, adjustable feeding and 6 controlled capacity
- New model belt drive motor technology
- Vibration-free isolated chassis



It is used for breaking and crushing wheat in flour factories. The roller, which is the most important machine of the flour factory, is two working in parallel. It consists of two rolls. Unlike the pneumatic roller, the incoming product amount is measured with the help of a sensor or load cell. Feed rollers it changes speed according to the incoming product amount and provides homogeneous flow. At the same time, between the rolls are closed by pneumatic pistons and allows the product to be grinded through balls. The bearings of the rolls are ductile iron and the arms of the rolls are conical. Gear driven and belt driven. It can also be produced with an optional touch control screen. Especially based on the opening system, It provides quick and easy access thanks to the side covers that can be opened one by one, and the possibility of rapid ball removal with the cover opened on the ball. Through the proven belt drive, it offers the advantage of quiet operation, elimination of oil maintenance and contamination. The machine consists of two side-by-side passages, each with a pair of balls positioned in parallel.

Specifications

- Optionally controlling ball speeds and spacing with PLC
- It crushes with specially cast balanced balls of 500-550 Brinell hardness.
- Fine adjustment mechanisms to adjust the intervals of the roller mills in micron values
- PLC system connection and use
- Product feeding control system, adjustable feeding and 6 controlled capacity
- New model belt drive motor technology
- Vibration-free isolated chassis



Thanks to the belt-pulley mechanism driven by an electric motor, the rotational motion is transferred to the sieve shaft. Connected to the sieve shaft The unbalanced screen weights enable the screen to vibrate. Changing the vibration amplitude of the screen in order to adjust the position of the screen weights around the screen shaft. Sieve, composite rods for comfortable vibration it is hung on the ceiling of the place where it is located. Thanks to this vibration movement, in specially designed sieve boxes, the product entering, It is classified and sieved according to its grain size. The product to be screened is sent to the screening area through one or more inlet pipes. Various type silk-covered cases allow separation in seven channels. This part is directed to the outlet by the channel. After the product is eliminated sent to the outlet pipe on the bottom plate. It also has sight pipes for product control and monitoring. 4, 6, 8 and 10 sieves with passages are produced. The screen is suspended with different amounts of composite rods according to the number of passages and weight of the screen. Each passage has a clamping device to prevent passage between cases. The maximum number of exits of passages is 8, exits it has a maximum diameter of 150 mm.

Specifications

- Special adjustable pressure equipment used to clamp screen racks down
- By adjusting the weights, the centrifugal force is adjusted, and this will allow larger and smaller rotation trajectories.
- It is possible to increase the sifting area with effective sifting at high capacities, special type sifter boxes.
- Possibility of closing gate doors conveniently and tightly with a special pressure compression device.
- Insulation panels covered inside to prevent condensation
- A wide range of standard and special screen adjustment possibilities to meet flow chart demands



It is used for cleaning and classifying semolina in flour and semolina factories. The product with adjustable flow rate, thanks to a curtain It is evenly distributed over the entire screen surface. Screening process is carried out with 2 or 3 layers of telero. Aerodynamic air duct and regulating valves With the help of creating an equal vacuum on the whole screen surface, products with extended adhesion surface such as bran and dandruff are kept in suspension by vacuum. it is separated and pushed into the output channel. The product (semolina) free from bran is classified according to its grain size thanks to sieves.

Specifications

- Noiseless working condition
- Simple cleaning process and hygienic working conditions
- Quick and easily changeable screens with high capacity-expanded screening area
- Adjustable sifting speed
- Minimum maintenance requirement and trouble-free operation
- Effective cleaning using a brush
- Light metallic sieve frames with adjustable clamping device



By separating the flour particles adhered to and remaining in the bran, it both prevents the loss of flour and increases the yield. The product rotates horizontally. Thanks to the special pallets on the rotor, the flour is separated from the bran while being thrown towards the screen. Centrifugal directed rapidly the product strikes the pore size preselected screen. Thus, the flour grains out of the sieve and the bran from the inside into the outlet channel directing is provided.

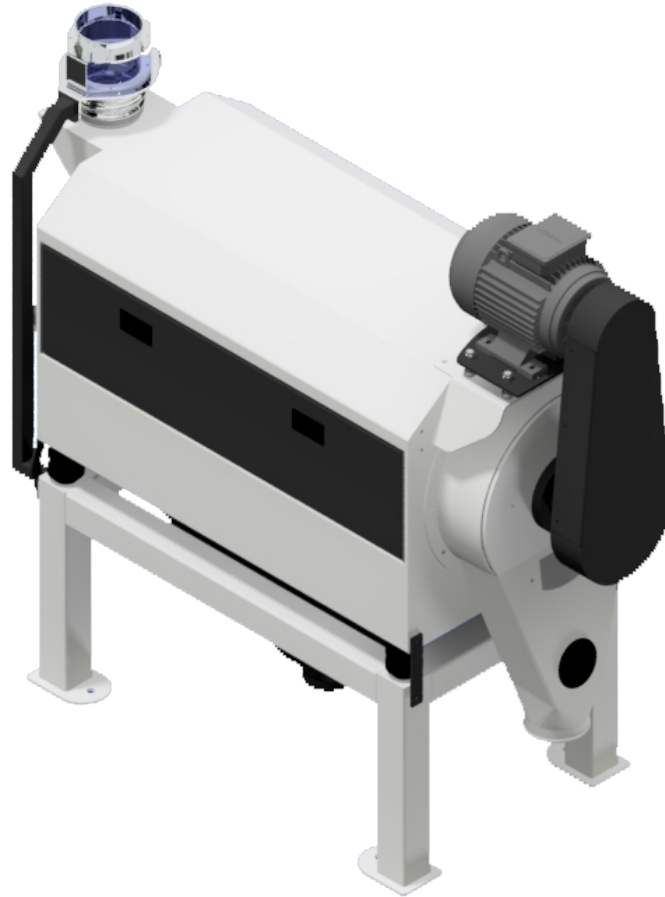
Specifications

- High quality, performance, efficiency, capacity
- Long life
- High precision
- Maximum hygiene
- Maximum security
- Maximum ease of use
- Minimum periodic maintenance need
- Minimum part replacement time
- Minimum energy consumption



GENERAL
MILLING TECH

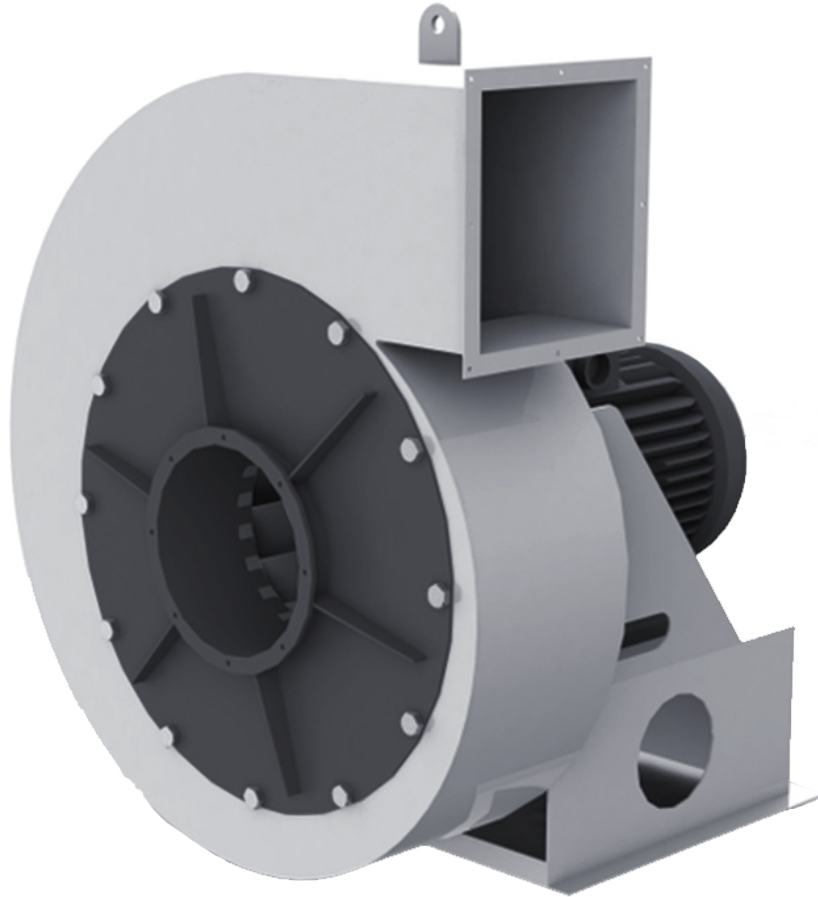




Vibro Bran brush increases the efficiency and loss of flour mills by separating the flour stuck to the bran and bringing it to the system obstacles. It can also be used as a dandruff brush. Due to the vibration of the machine, there is no blockage in the sieve. To the desired flow chart hole diameters of the screen can be changed.

Specifications

- Noiseless working condition
- Easy cleaning process and hygienic working conditions
- Maximum capacity
- Minimum maintenance and problem preventive - freelance work
- Effective cleaning using a brush



It is the system that allows the crushed goods to be transported by suction. Multi-purpose and quiet operation with the highest efficiency, minimum energy consumption has the feature. The fan mounted on the chassis with a steel cage is placed on rubber feet (wedges) to prevent vibration and vibration. Since the static and dynamic balance is taken, the noise level is minimized, the inlet and outlet pipes prevent the transfer of vibration. It is supported by rubber flanges to prevent it.

Specifications

- Safe working conditions
- Minimum maintenance
- Smooth and silent operation
- Fixed to the main body with anti-vibration supports
- Minimum energy consumption
- Standard rotation at certain angles for the outlet position
- High efficiency
- High quality

GENERAL
MILLING TECH



Jet filter cleans the air dust mixture from dust, keeps the dust and ensures that the clean air is discharged from the chimney. Round filter body before the cyclone system performs purification and ensures that all dust particles are retained by means of bags. Aspiration in flour mills and to separate the particles in the air used for transport from the air. Air with dust and flour enters the machine and this dust sticks to the filter bags in the machine.

First purification is carried out thanks to the centrifugal power generated in the round filter body. These filter bags are whipped with compressed air and dust goes down to the bottom of the filter. Blower or compressor is used for this cleaning process. These dust accumulated under the machine bottom scraper or rotoflow is used for throwing.

Specifications

- The load capacity of the filter according to the product
- Filter hoses max. cleaning power
- The highest degree of cleanliness of the purified air
- There is no need for another tank thanks to the sweeping air tank integrated with the filter.

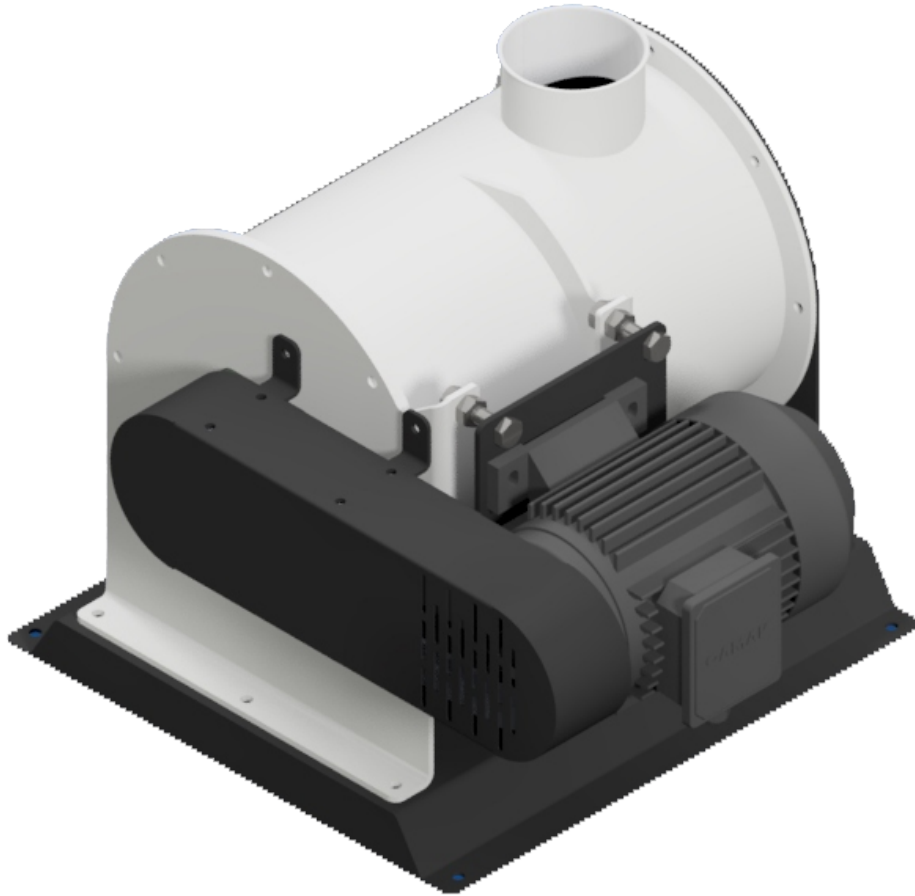


It performs the dissolving and grinding process in the appropriate semolina passages of flour diagrams, in this passage it increases the flour yield at high rates. This process is carried out with lower energy than other grinders. These machines are used in coarse and fine semolina passages, It can be mounted later or to the upper turning points of the pneumatic carrier pipes to be used as elbows.

Specifications

- High capacity
- High performance for every model
- Hygienic working conditions
- Possibility to shorten the flour diagram
- Low investment and operating costs
- Mounting possibilities, on the floor or suspended from the ceiling
- Minimum and easy maintenance
- Low energy consumption and high efficiency
- Durability and long lifetime compared to other semolina crushers
- Easy installation and small space requirement

GENERAL
MILLING TECH



This machine is used in flour mills to separate the stuck core particles in the product coming from the roll.

Specifications

- Soft separation process does not spoil the product,
- Position shape hanging both on the floor and ceiling,
- Right and left directions of spinner bars,
- Low power requirement,
- Coupling or pulley connection system
- High capacity
- High performance for every model
- Hygienic working conditions
- Possibility to shorten the flour diagram
- Low investment and operating costs
- Mounting possibilities, on the floor or suspended from the ceiling
- Minimum and easy maintenance
- Low energy consumption and high efficiency
- Durability and long lifetime compared to other semolina crushers
- Easy installation and small space requirement

GENERAL
MILLING TECH



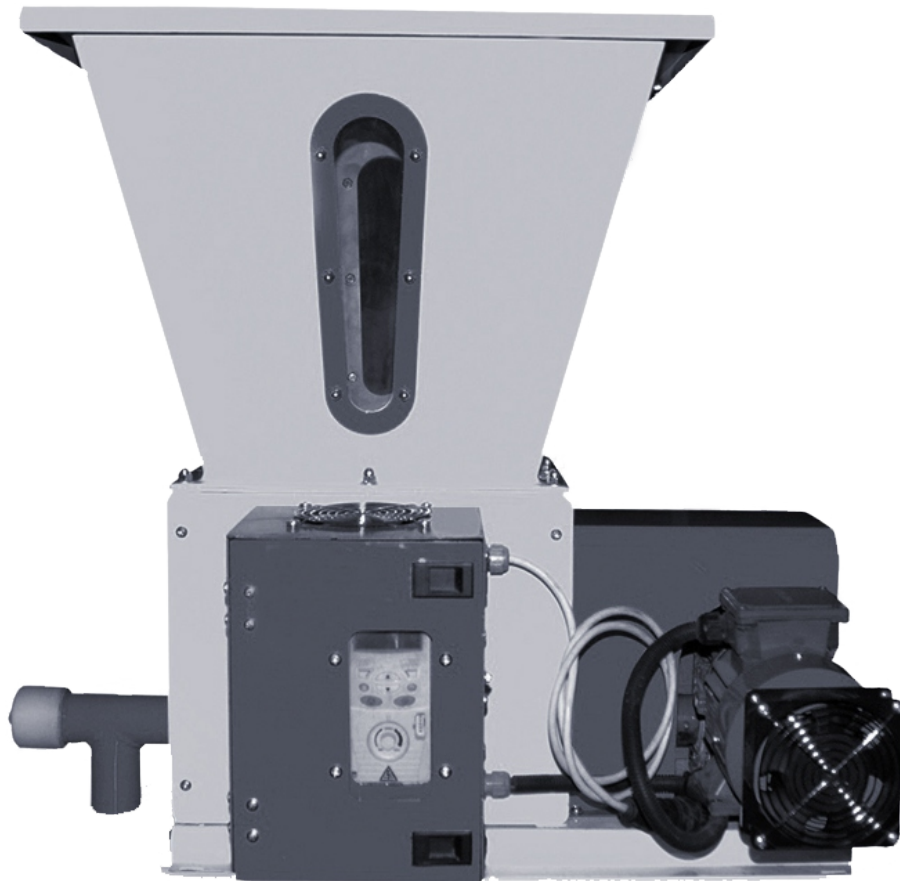
The cylindrical body structure is suitable for product flow, single or double sided, depending on the project conditions, it can be connected to the floor deck or floor. It is produced in a structure with suitable bearing legs. The vibro feeding system connected to the conical structure has an adjustable flow rate flap and one it is driven by a vibromotor.

In flour factories, in the parts that require the adjustment of the ground grains at the appropriate flow and simple feeding, filter In sections where the outlets need to feed a pneumatic line or a machine and where dust wastes are brought into the system with pneumatic used.

Specifications

- Maximum capacity and efficiency
- High quality
- Low power consumption
- Durability no wear and tear parts
- Easy to use and adjust

GENERAL
MILLING TECH



Thanks to the electronic speed control device on it, feeding can be made between 1.5 cm³ and 875 cm³ per hour. Pallet mixer inside are available.

Specifications

- Maximum capacity and efficiency
- High quality
- Low power consumption
- Durability no wear and tear parts
- Easy to use and adjust
- Homogeneous mixture

GENERAL
MILLING TECH



It is designed to ensure the control sieve feeds properly.

Flour distributor is mounted on control sieves. It ensures that the control sieve is fed regularly and in equal amounts. Top of the flour dispenser with the rotating bowl driven by a reducer motor, it enters from the section located in the center and equally realizes the distribution of quantities.

Different capacities and models are available according to the needs of the screen.



GENERAL
MILLING TECH



The control sieve is used for the final control before packaging in the packaging unit of the flour factories. Each square screen The product coming to the passage enters through the pressure pipe and moves vertically and horizontally through the pre-set flow paths through the passage. The final checks are made after the flour sifting process. The flour, whose last checks are made, is directed to the bagging process. Flour and semolina factories milled by final screening of mixed feeds in processing plants of wheat, corn and similar grains, feed mills. Various food products processing for sifting of coarse grain corn, crushed pellet feed, barley, oats and similar processes remaining in the materials used in facilities.

Specifications

- Smooth and quiet operation
- Completely sealed sieve rack
- Easy to place and feed
- Simple design and easy to use
- Minimum time is required for maintenance and cleaning work.
- High efficiency, light structure, small space requirement
- Easy to change from the screen rack
- Easy accessibility to screens and drive systems from all sides
- Sieves adapted to meet special needs

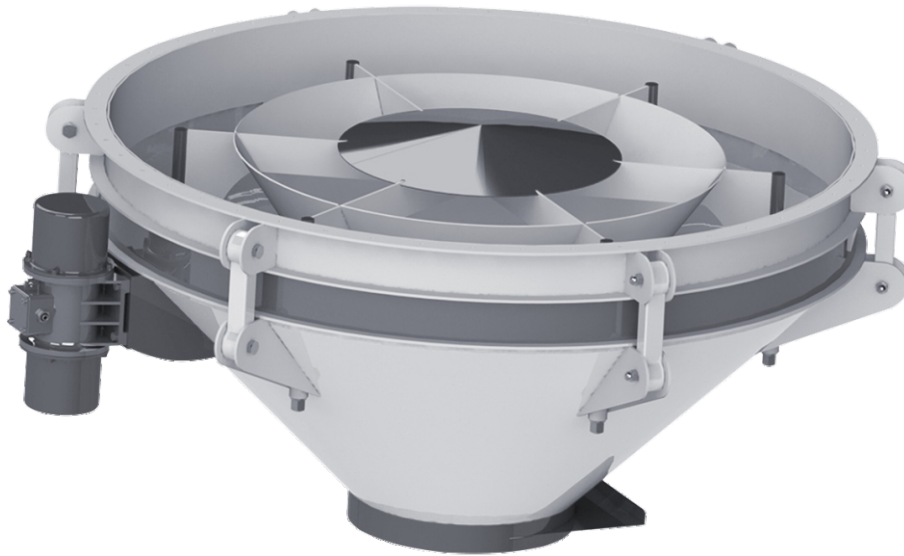
GENERAL
MILLING TECH



Bagging scales are used to weigh the powdered final product in flour / semolina mills with high precision with screws. Used in automatic packaging. 10- 25-50 kg packaging options, automatic filling, bag mouth. Compression and sack with its shaking options, it is highly efficient with minimum operator requirement. It consists of 3 main parts: Double speed screw feeding system, Electropneumatic controlled fast and precise weighing and controlled cutting flap.

Specifications

- Weighing pan with load cell, electropneumatically controlled and double discharge cover
- Electropneumatic controlled sack tightening nozzle and shoes
- Specially designed PLC electronic control unit and panel
- With 50 kg flour sack, accuracy up to +/- 50 grams per sack, optional single-weighted or double-weighted regulation system
- Automatic filling of sealed bags
- Fast and precise weighing with Load Cells
- Programmable set value with 10 gr intervals
- Programmable number of bags to be filled
- Separately programmable upper and lower tolerance value
- Warning in weighing out of tolerance
- Filling capacity between 12-20 tons / hour depending on the product type
- Displaying bag count and product weight



It is used for easy unloading of the product inside the warehouse in free flowing warehouses. Especially milled grain products and flour. It is used for unloading flour, semolina, bran and waste from silos in factories. Storage of difficult-to-flow products in silo to achieve easy and regular flow by preventing flow difficulties that may be encountered, bridging at the time of flow with vibration and special internal structure allows to be done.

Thanks to its ability to connect tube and screw to the outlet, it provides volumetric controlled outlet and dosing of the product. To flour and bran the distributor and guiding part in varying form makes it easier for the product to dissolve by reaching the walls of the vibrator.

Specifications

- Robust body and high efficiency
- Easy assembly and disassembly
- Silent vibration and movement
- Long life and durability
- Maximum quality
- No irregular flow in my discharge
- Can be applied to existing silos



It is designed to precisely measure the flow rate, speed and weight of the granular material in the system. Clear information, system It is provided by collecting information from scales placed on different product lines inside.

Specifications

- Precision weighing
- Tolerance error warning alarm
- Fully PLC automation control
- Keyboard calibration option
- PC connection
- Easy maintenance
- Programmable data and mode options

GENERAL
MILLING TECH



It is used to transport the products pneumatically to different points over a single line. During transport it allows to change direction.

It is used in Food, Chemical, Stone Soil and Lime Industries.

Specifications

- High quality
- Minimum maintenance requirement
- Minimum space requirement
- Long life and durability
- Maximum hygiene

GENERAL
MILLING TECH

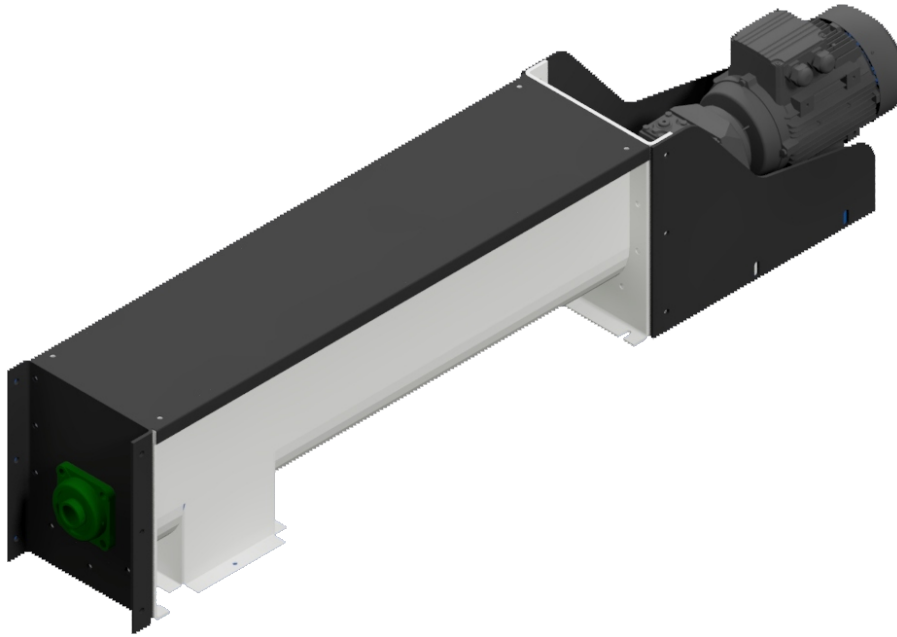


It is used for the horizontal, vertical and inclined transportation of all flour, fine and medium grinded materials, to transfer to screw conveyors.

Specifications

- Investment cost is low
- Less space is occupied
- Low power requirement
- It is durable
- Long life
- Conveyor shaft is directly connected with chain gear or belt drive
- Very easy to maintain





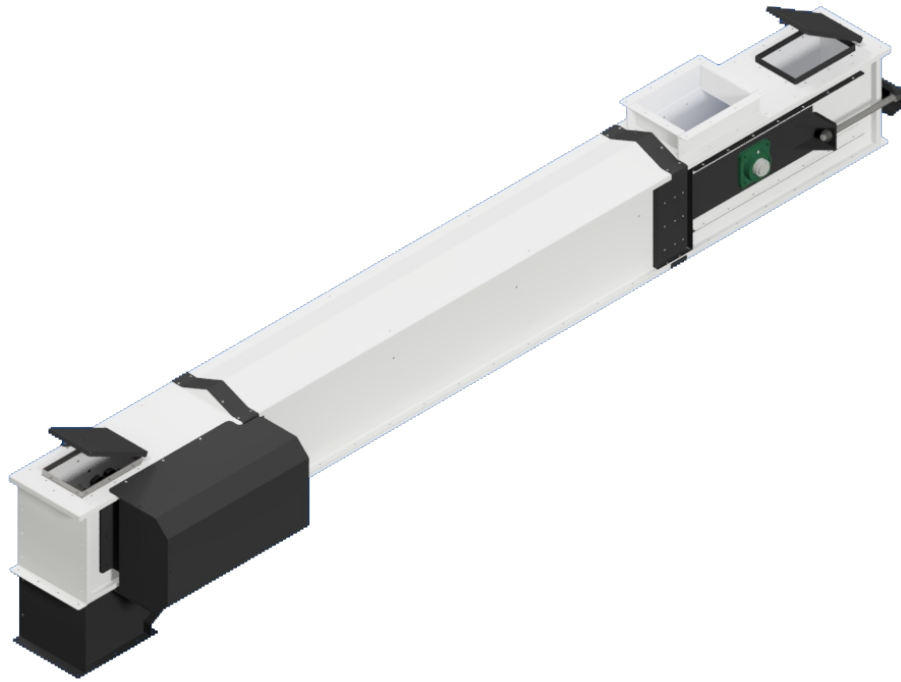
Screw conveyor is used for horizontal transportation of grain or finished products. It has a U-shaped structure.

Specifications

- Standardized sizes and modular sections
- Standardized spare parts
- Possibility of production for special requests and applications



GENERAL
MILLING TECH



Depending on the central control, it is set up with chain gear, and it moves the product that falls on it. Body is made of steel material. It has idler drive bearing system. It has been designed with a special tensioning device. To the desired capacities varies according to carrier plates are made of hardened steel. It is used wherever horizontal transportation is possible. It is used in feed, food, chemical, mining, sawdust and soil industries.

Specifications

- Adjustable capacity
- Dust-free operation.
- Long life farewell blight
- Control doors
- Low maintenance and basic operation
- Protected cover for body and motor
- Dust and weather proof design

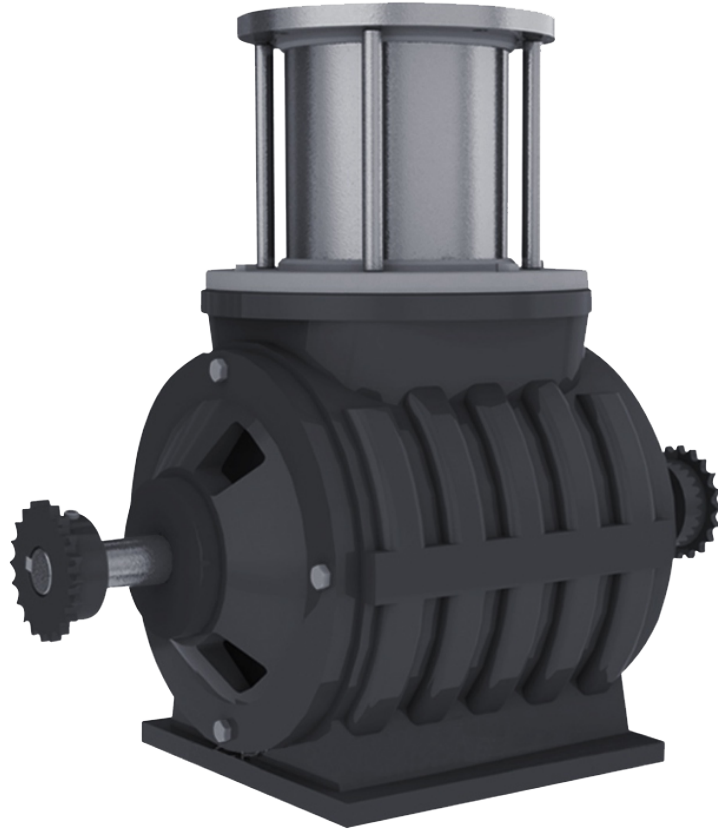
GENERAL
MILLING TECH



Bucket elevators are used to transport granular or powdered products with buckets attached to their belts from the bottom up. They are manufactured in various sizes and capacities according to the needs.

Specifications

- Chain or belt - pulley driven reducer system
- Dust proof
- Product return blocking system.
- Control doors
- The elevator head motor plate can be easily disassembled.
- Main plate and motor can be used on the right or left side.
- Lower adjustment bolts can be easily attached to bring it to the correct setting.
- Buckets, bolt and strap included.
- High efficiency with less power consumption
- Easy and minimal maintenance Durability and long service life
- Smooth operation
- Movement direction control switch for safety precaution

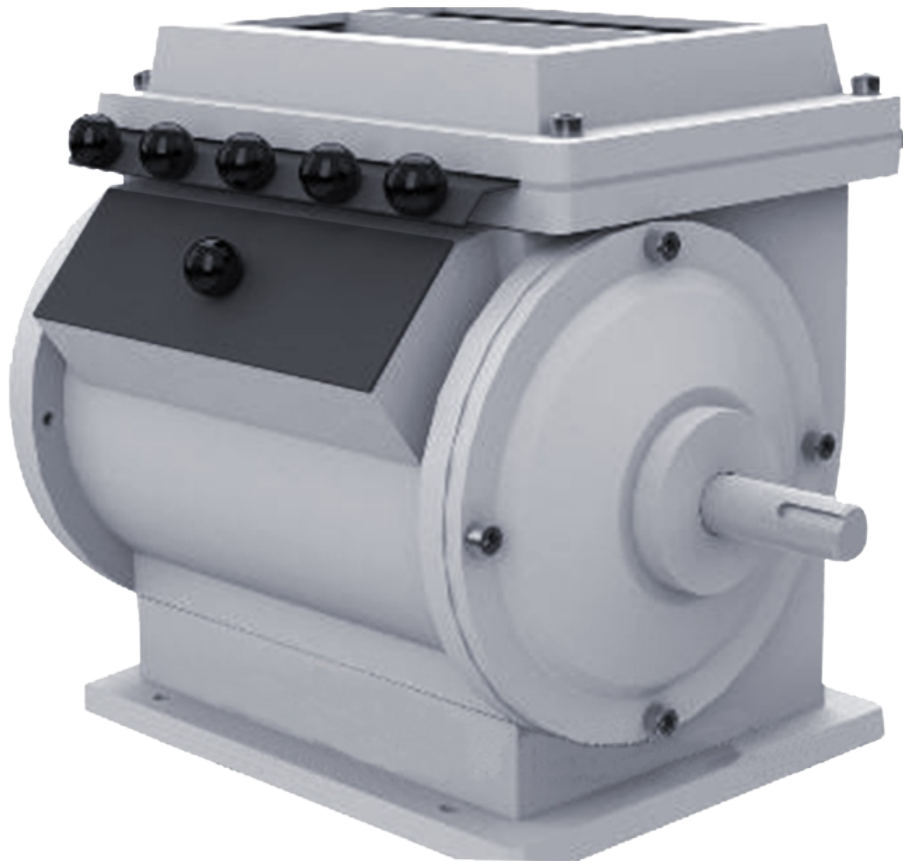


It provides separation of air and goods in the pneumatic system. During this process, the air loss of the system is kept to a minimum.

Specifications

- High quality, performance, efficiency, capacity
- Long life
- High precision
- Maximum hygiene
- Maximum security
- Maximum ease of use
- Minimum periodic maintenance need
- Minimum part replacement time
- Minimum energy consumption

GENERAL
MILLING TECH



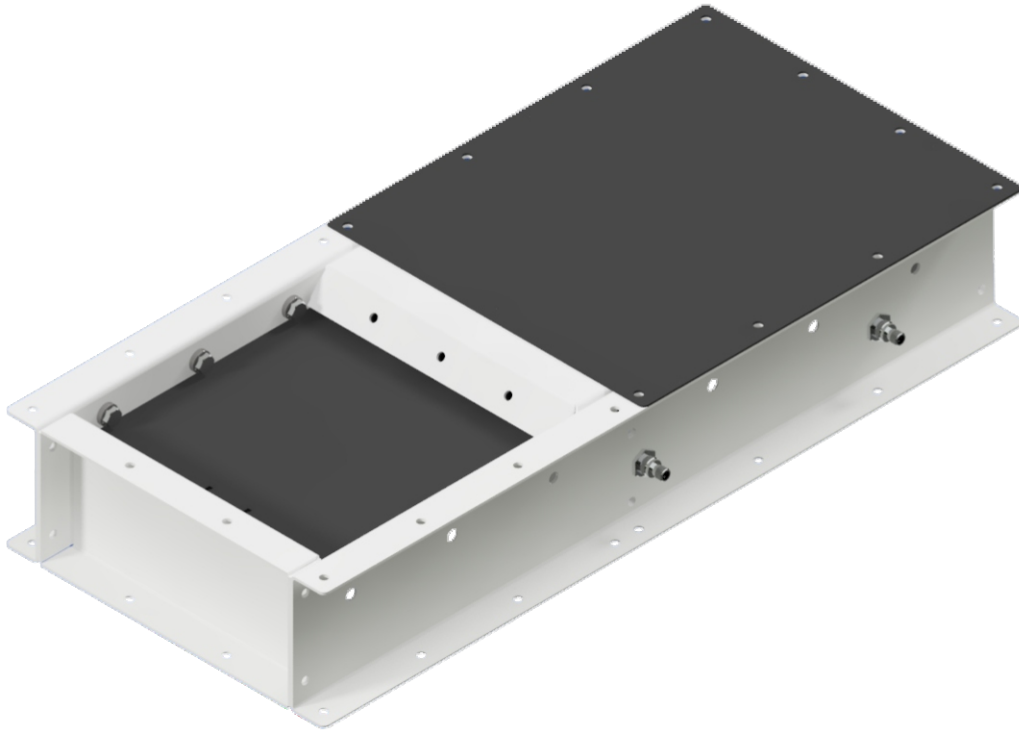
Machine that helps to mixing different types of grains in desired ratios before grinding or tempering and adjusting their capacity.

Usage areas;

- In flour and semolina factories
- In Egyptian factories
- In feed factories
- In oil refineries



GENERAL
MILLING TECH



It is used to discharge or cut the flow of free flowing raw material or product to the desired terminal.

It is used to discharge the product transported by the spiral using under the spiral to the appropriate parts. Reciprocating pneumatic piston or manually. The spiral is manufactured in different models according to the chain conveyor model.

Two different models (pneumatic and manual) can be used at the outlets of silo and bunker with screw and chain conveyors.

Specifications

- Easy setup
- No need for maintenance
- Can be connected with PLC systems
- Easy disassembly
- Leak-proof sliding system

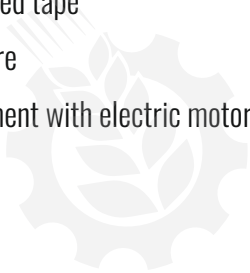
GENERAL
MILLING TECH



It is a belt conveyor used to load the truck or truck after sack or valve bag filling. Height above can be adjusted according to the height of the vehicle with the adjustment mechanism. Inflatable rubber wheels allow the mobile use of the belt conveyor. It can be easily transported to the loading point through its lockable movable wheels.

Specifications

- Sergeant profiled tape
- Mobile structure
- Height adjustment with electric motor



GENERAL
MILLING TECH

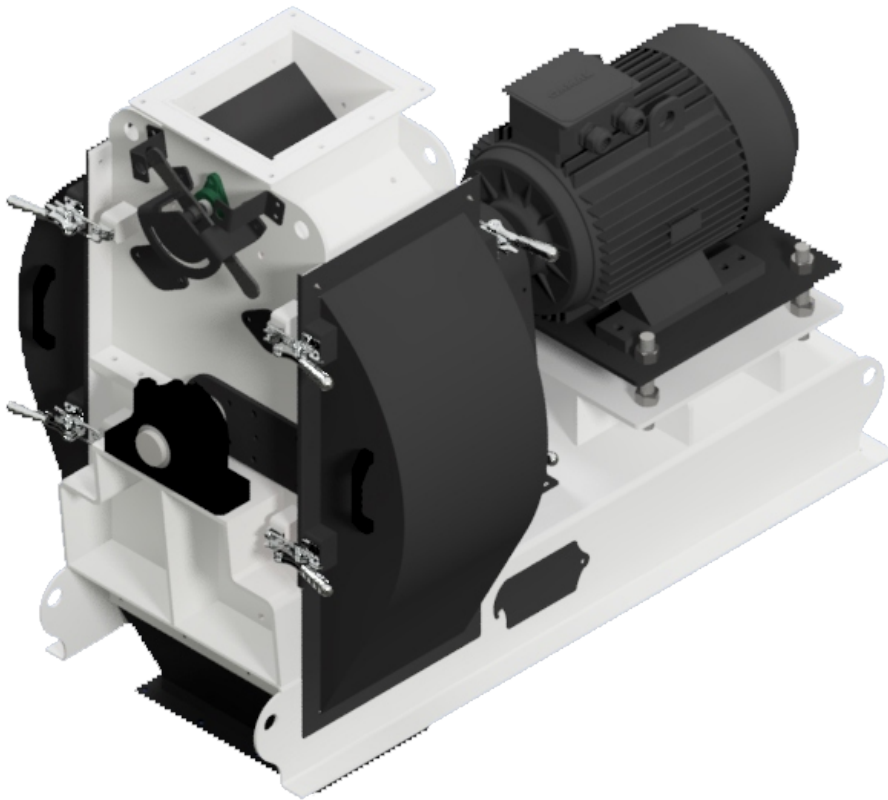


Dosage Weigher used in dosage, mixing and pellet unit in feed plants to weigh and mix semi-products in feed factories. It is used to transform the material into a product. Different substances to be found in feed from different silos in accordance with the prescription used in dosing. We weigh and ship different products according to the desired ration (ratio). Fast filling and discharge with a capacity of 5-10-20 tons per hour.



GENERAL
MILLING TECH



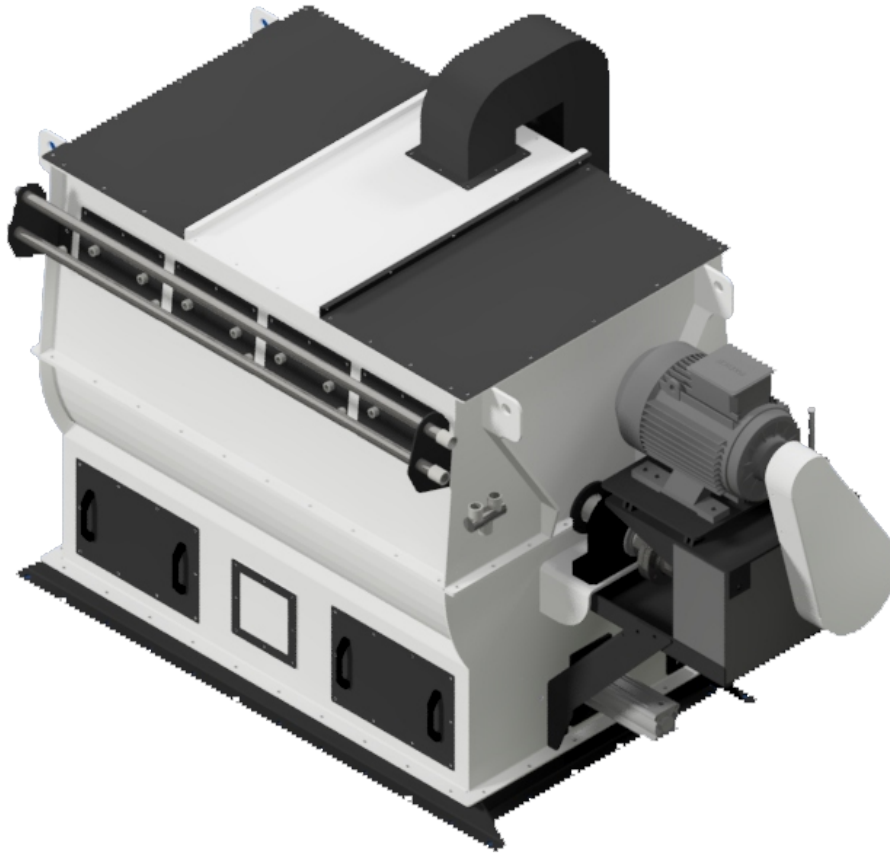


The hammer mill is a practical and efficient solution for crushing and crushing processes needed in many sectors (especially food and recycling). It ensures that the semi-finished product is grinded to the desired particle size in the shortest time possible. High specific gravity in the final product. It is an ideal grinder if requested.

The hammer mill gives the desired results in any particle size semi-finished product. Different character, fibrous, sticky, hard and soft. Works effectively with ingredients. The final product with a grain diameter of 1mm to 10mm can be obtained with a hammer mill. All types of feed suitable for mills, organic fertilizer mills and extruder units.

Specifications

- Heat treated hammers
- Quiet and vibration-free operation (90-93 dbA)
- Minimum aspiration requirement
- Operation and maintenance convenience
- Wide capacity range
- Maximum flexibility and variety
- Quality and proven performance
- Spare parts and customer service
- Low investment, operating and maintenance costs

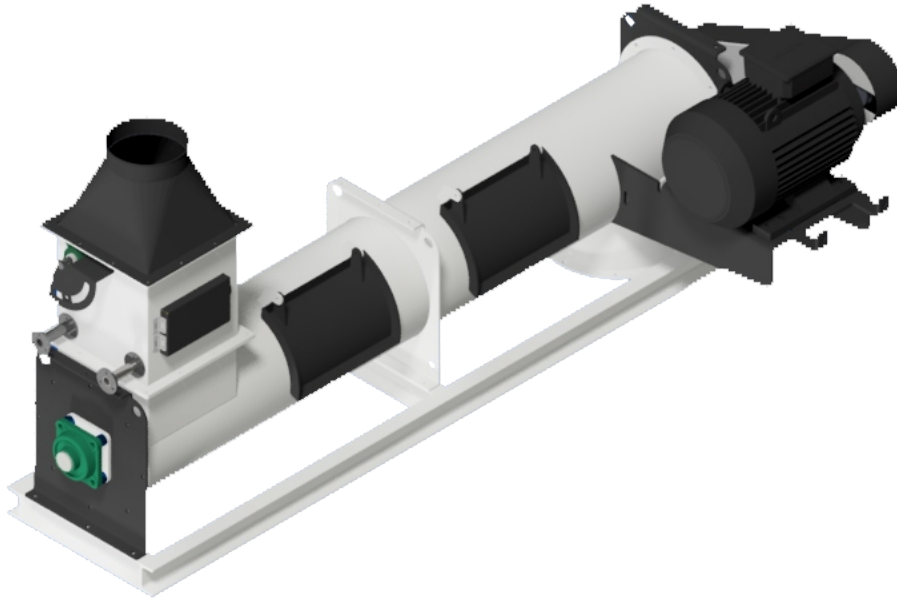


Mixer to homogenize the mixing of different raw materials milled into the mill with poor free flow during the process is designed. Both types of mixing are possible with or without the addition of liquid. Crushed raw materials with a precision of 1/100000 provides a mix. Loading time is reduced by large pneumatic traps; and unloading time, double unloading open end to end Position / hour increases with time saved during finishing. 100% safe unloading bodies that do not load. The rotating equipment should never be turned on until the cycle is complete.

Specifications

- Wide capacity range
- Low investment, operating and maintenance costs
- Maximum flexibility and variety
- 100% Safe maintenance covers
- Lock system for doors against energy cuts
- Robust body structure and standard powder tube
- Wide choice of alternatives for liquid addition

GENERAL
MILLING TECH

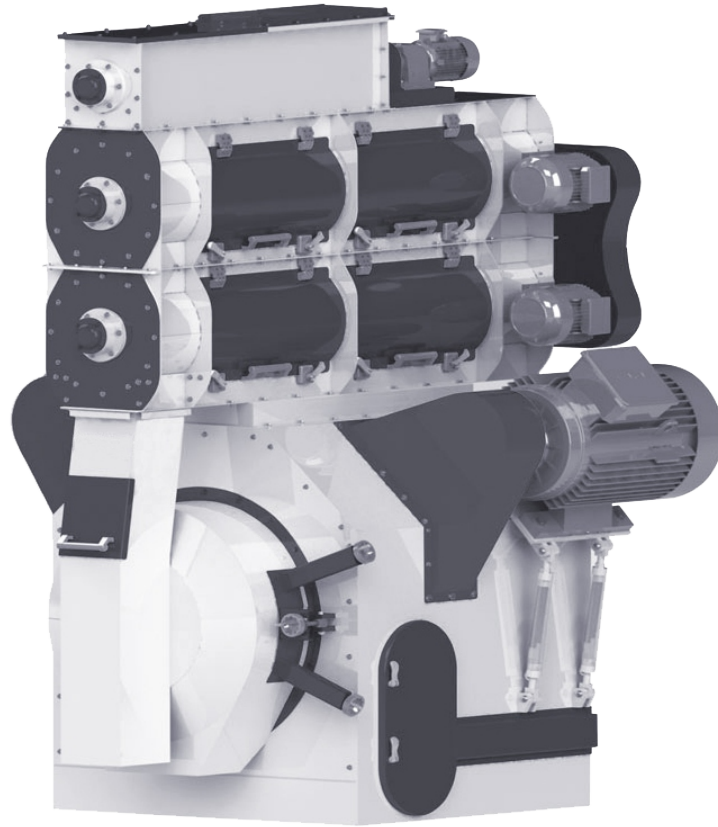


This machine is designed for homogeneous mixing of the liquid grinder with the product additives in feed mill facilities. Material up to U type body requirement in Carbon Steel ST37 material. Liquid is mixed homogeneously with 1-11%. Maximum mixing is achieved with 40 - 42 degree breaks.

Specifications

- Body made of St37 or AISI 304 quality stainless;
- Adjustable pads
- Continuous system works
- Single or double shaft option
- Dynamic and statically balanced rotor
- Ergonomic maintenance covers
- Safety sensors
- Wide capacity range

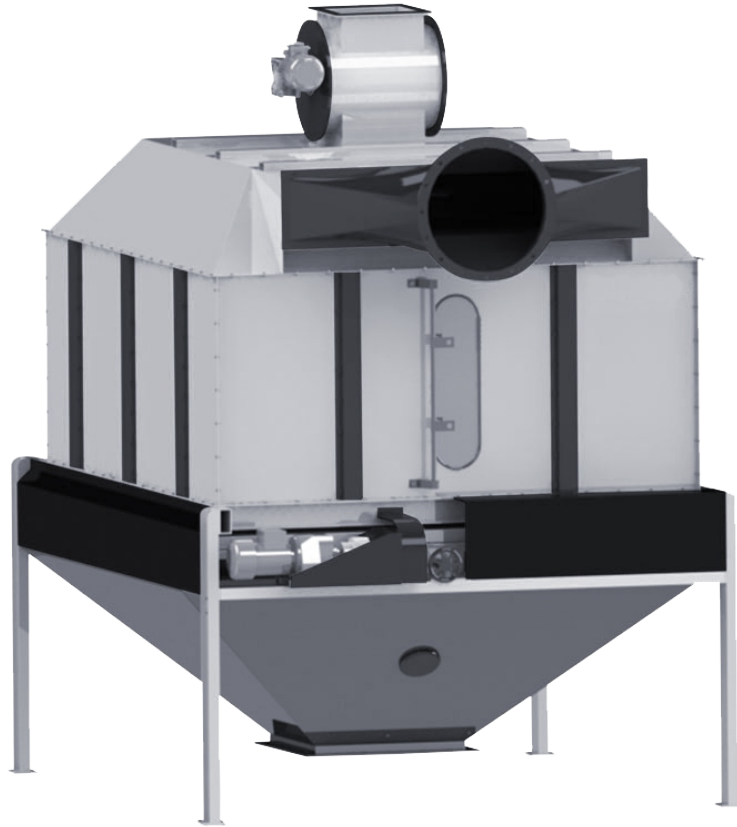
GENERAL
MILLING TECH



Pelleting process in the compound feed industry, pellet feed both physical (ease of transport, reduced dehomogenization and increased density) and is increasing due to the positive effects on the performance of the animals that consume this food. The positive effects of the feed depend largely on the physical quality of the pellet. In pellet feed production, from production to animal feed should be aimed to protect the form in time. Properties of food (physical and chemical properties, formulation) and applied technology (water vapor, annealing, oil addition, matrix properties and cooling) are factors affecting pellet quality. The desired quality pellet feed production is possible by considering the factors in question.

Specifications

- Homogeneous, high quality and nutritious pellet production
- Speed adjustable feeding screw
- Conditioner with adjustable pads and conditioner with the addition of steam
- Pellet production in desired diameter and length on all steam armatures, valves, pressure reducers
- Discs and rollers imported from Germany
- Single or double engine feature depending on operating conditions
- Safety pin feature in sudden loads and impacts
- Wide capacity range
- Low investment, operating and maintenance costs
- Spare parts and customer service



It is used to cool the feeds that come out of the pellet press in pellet form as hot, to ambient temperature. Against the airflow principle works according to. The outdoor air is brought into contact with the feed in the cooler, while the temperature of the feed decreases, the warmed air aspiration system removed from the environment.

The cooled feed is discharged with the discharge system on the cooler. Discharge system, depending on the product to be used, with a grid or selected as hydraulic flap. The discharge system is adjustable and works according to the capacity.

Temperature is controlled by the levels on the body. The feed dust in the hot air going to the aspiration unit is reused with the cyclone. sent back to the system. Pellet feed becomes hard after cooling. Thus, dusting in the packaging is prevented. Also suitable Since it drops to moisture, its shelf life is extended. Single or double layered models are available for the purpose of use.

Specifications

- Easy assembly with modular body
- Efficient cooling with air lock system at product entrance
- Homogeneous product dispenser system
- Grille model, motor or hydraulic driven product discharge system
- Level control
- Temperature control

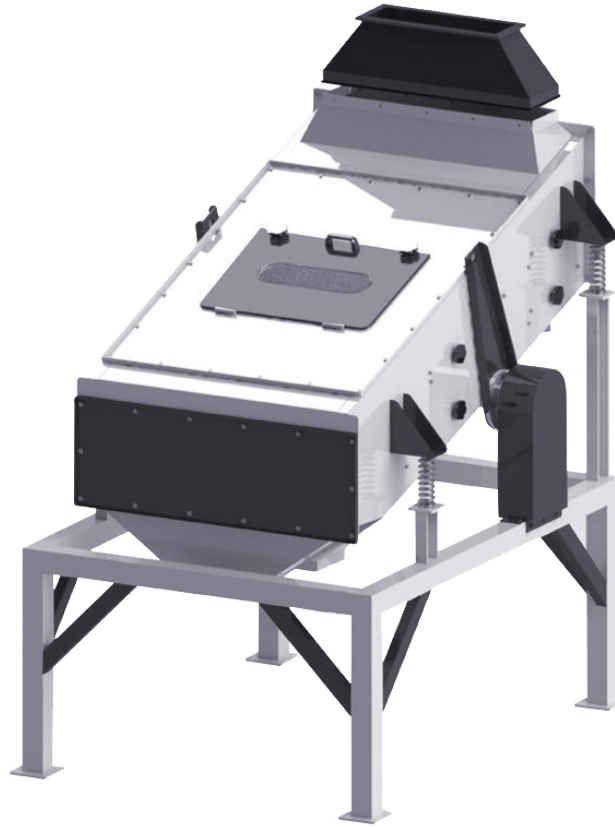


It is a specially designed crusher to cut Ø3-5 mm pellet feed into small pieces. With this design, both granular feed and The quality of the pelleted feed is utilized. It is mainly used for poultry and fattening pellets and aquaculture pellets. There are two rolls in the pellet crusher, whose gap distance can be adjusted (manually or by motor). Thanks to specially designed rolls, High capacity and quality processing is done on all kinds of grains. These rolls are always suitable for high productivity.

The roll mechanism is regularly fed by the feeder unit. The pellet is evenly distributed over the entire roller surface. With this mechanism Thanks to regular feeding, homogeneous feed with less powder ratio is obtained without overloading the machine.

Specifications

- Ball settings are made automatically
- Robust design, Silent operation
- Dust-free structure during operation
- Simple operation and compact design
- Wide capacity range
- Maximum flexibility and variety
- Quality and proven performance
- Spare parts and customer service



The pellet vibration screen enables the separation of the particles of the products according to their size, eliminating foreign substances and the production. It ensures the reintegration of granules of uncombined size with vibration screen and different techniques. Vibration sieves are generally machines with robust construction and maximum filling capacity. Screen vibrating with vibration motors, it makes it possible to diversify products in a preferred way. Power can be adjusted according to the conditions of the process. Thus, a high power Newton vibrator can provide the desired small vibration force.

Specifications

- High capacity
- Compact and lightweight design
- Low energy cost
- Easy to install and use
- Easy sieve change thanks to wire mesh and frameless sieves
- Body covers providing easy intervention
- Possibility of sifting in desired sizes
- Sieve coefficient 1-4

GENERAL
MILLING TECH

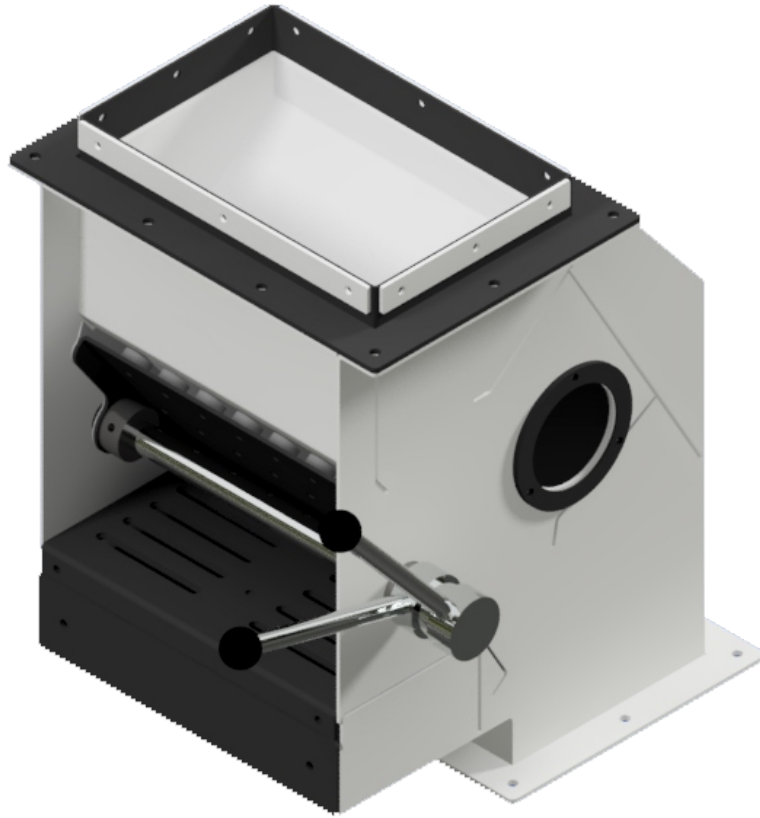


Weighing system consists of steel construction. It has dust absorption feature to prevent dust coming out of the silos. The augers used have a diameter of 100 mm. There is a pneumatic valve at the outlet to prevent product spillage. Flexible with dosage scale structure. The product weighed with the help of the sensitive weighing system in the dosing scale is transferred to the mixer with the help of pneumatic butterfly valves transmitted.

Specifications

- Weighing precision
- Flexible formula combination
- Fully automatic controlled process
- Flexible structure
- Dust-free design

GENERAL
MILLING TECH

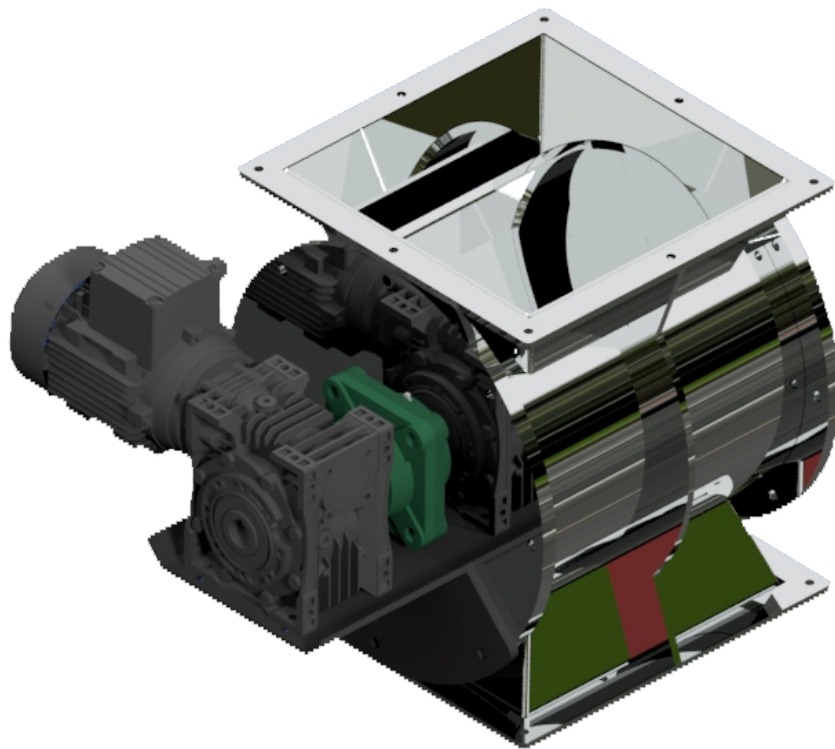


Magnets are used at the raw material entry points of the factories, iron, metal, etc. for removing foreign matter is designed. While the raw material entering the magnet passes through the magnetic surfaces, the metals are caught by the magnets and the raw material passage completed. Metals caught with the help of pneumatic pistons are collected in the metal collection section and removed from the system. Single storey there are 3 types of magnets, Y type magnets and Z type magnets.

Specifications

- Easy installation and maintenance
- Low energy cost
- Product control covers
- Automatic metal discharge feature

GENERAL
MILLING TECH



Air locks; Steam or air circulation in the flow lines of raw materials and products in facilities such as feed, food, chemicals and fertilizers. They are the equipment used to ensure a regular feeding by preventing it from affecting the previous steps in the process. Pellet press It can be used in areas such as feeding, cyclone dust outlets, under sieve.



GENERAL
MILLING TECH





Molasses and Oil Tank To bring the molasses and oil needed daily to the proper fluidity level to be fed into the system provides heating. The weighing system is load cell weighing.



GENERAL
MILLING TECH



STORAGE SYSTEM





STORAGE SYSTEM





GENERAL
MILLING TECH

**BUILDING
REAL WORLD
SOLUTIONS**

Küçük Sanayi Sitesi 67. Sokak No:4 ÇORUM/TÜRKİYE
+90 543 339 91 46 info@generalmillingtech.com

www.generalmillingtech.com